



Abbeyfield House, Henleaze

Abbeyfield House, Henleaze is two miles from the city centre, near Henleaze village and Westbury Upon Trym shops. Across the road, the Durdham Downs offer scenic walks and the city centre is only a twenty-minute bus ride away. The house has 25 one-bedroom and studio apartments with en-suites and kitchenettes. Our spacious and welcoming dining and garden rooms are the social hub of the house, offering delicious meals and a variety of engaging activities.

Abbeyfield, supporting independence in later life.

We have four houses which are located in Hanham, Henleaze, Redland, and Keynsham that provide supportive, independent living in self-contained flats. Each house offers communal lounges, dining rooms, and lovely gardens, fostering a caring community where residents enjoy privacy, companionship, and a vibrant lifestyle.



Our Private flats provide independence for older adults with reassuring support available.




Avoid the increasing costs of living with one monthly rental fee that covers all.



**Delicious Home cooked meals provided every day.
Experience the peace of mind and security that comes from living within our welcoming and supportive Houses.**

 43-49 Westbury Road, Henleaze, Bristol, BS9 3AU

 www.abbeyfield-bristol.co.uk

 01179 736997

Abbeyfield
Bristol & Keynsham



Room 14

£2656.26

Per Month All-inclusive price which includes meals and all utilities.



En-Suite



Garden



Dining Room



Personal Alarm

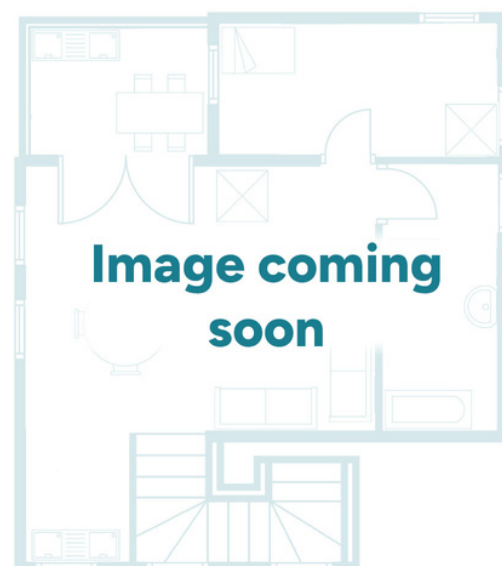


Social Events



Communal Lounge

One bedroom apartment at Henleaze House. The apartment benefits from a large open place space with a newly updated kitchenette and a separate bedroom area with ensuite bathroom.



Contact us to book a viewing

 43-49 Westbury Road, Henleaze, Bristol, BS9 3AU

 www.abbeyfield-bristol.co.uk  0117 9736997

Abbeyfield
Bristol & Keynsham