



Abbeyfield House, Redland

Our Redland house features seventeen one-bedroom and studio apartments equipped with en-suite facilities and kitchenettes. The elegant garden room serves as the social hub, where residents enjoy daily meals and activities organised by our staff. Residents can indulge in delicious home-cooked meals prepared by our in-house chef, with facilities available in the apartments for making breakfast.

Abbeyfield, supporting independence in later life.

We have four houses which are located in Hanham, Henleaze, Redland, and Keynsham that provide supportive, independent living in self-contained flats. Each house offers communal lounges, dining rooms, and lovely gardens, fostering a caring community where residents enjoy privacy, companionship, and a vibrant lifestyle.



Our Private flats provide independence for older adults with reassuring support available.



Avoid the increasing costs of living with one monthly rental fee that covers all.



Delicious Home cooked meals provided every day.



Experience the peace of mind and security that comes from living within our welcoming and supportive Houses.

 Abbeyfield House, 222-224 Redland Road, Bristol, BS6 6YR

 www.abbeyfield-bristol.co.uk  01179 736997

Abbeyfield
Bristol & Keynsham



Room 4

£2,815.58

Per Month

All-inclusive price which includes meals and all utilities.



En-Suite



Garden



Dining Room



Personal Alarm

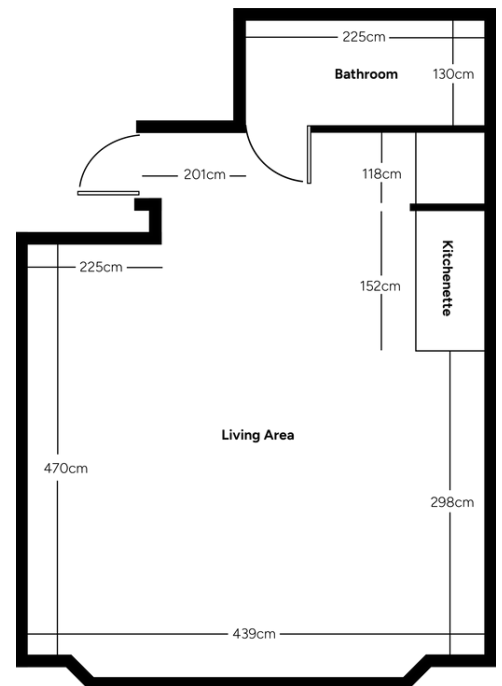


Social Events



Communal Lounge

This spacious studio apartment is situated on the lower floor of Redland House. Over-looking the garden the apartment benefits from a large open plan space with kitchenette, storage space and an ensuite bathroom.



Contact us to book a viewing

Abbeyfield House, 222-224 Redland Road, Bristol, BS6 6YR

www.abbeyfield-bristol.co.uk 01179 736997

Abbeyfield
Bristol & Keynsham