



Abbeyfield House, Hanham

Located just five miles from Bristol city centre, Kift Lodge features its own gated driveway and is set back from the road. Local amenities and Hanham High Street are a short walk away. The house offers 20 spacious studio and one-bedroom apartments, complete with gas central heating, en-suites and kitchenettes, allowing you to personalise your space. The dining and garden rooms serve as social hubs for activities and home-cooked meals, while the landscaped gardens provide a tranquil area for relaxation.

Abbeyfield, supporting independence in later life.

We have four houses which are located in Hanham, Henleaze, Redland, and Keynsham that provide supportive, independent living in self-contained flats. Each house offers communal lounges, dining rooms, and lovely gardens, fostering a caring community where residents enjoy privacy, companionship, and a vibrant lifestyle.



Our Private flats provide independence for older adults with reassuring support available.



Avoid the increasing costs of living with one monthly rental fee that covers all.



Delicious Home cooked meals provided every day.

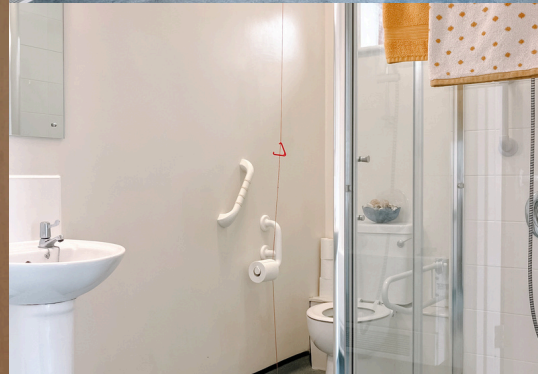


Experience the peace of mind and security that comes from living within our welcoming and supportive Houses.

 Kift Lodge, 136 Memorial Road, Hanham, Bristol, BS15 3LQ

 www.abbeyfield-bristol.co.uk  01179 736997

Abbeyfield
Bristol & Keynsham



Room 13

£2,710.46

Per Month

All-inclusive price which includes meals and all utilities.



En-Suite



Garden



Dining Room



Personal Alarm

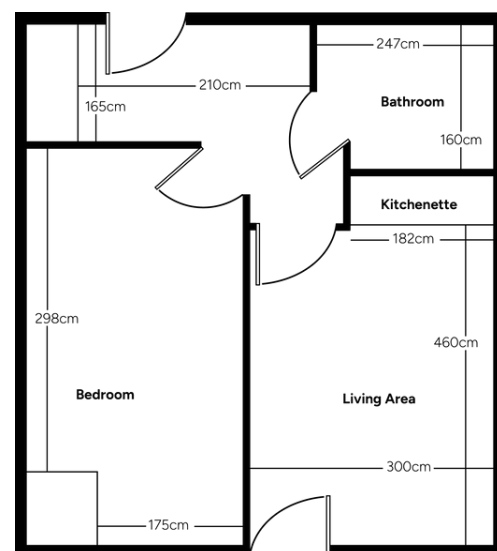


Social Events



Communal Lounge

This modern one-bedroom apartment is situated on the ground floor of Kift Lodge. The apartment benefits from a spacious bedroom, large open plan living area/kitchenette, storage space and ensuite bathroom. The living area over-looks the beautiful front garden.



Contact us to book a viewing

Kift Lodge, 136 Memorial Road, Hanham, Bristol, BS15 3LQ

www.abbeyfield-bristol.co.uk 01179 736997

Abbeyfield
Bristol & Keynsham