



Abbeyfield House, Keynsham

Abbeyfield House, Keynsham is located on a quiet residential road, just minutes from Keynsham's bustling high street, which offers cafés, shops and a popular monthly farmer's market.

Conveniently situated between Bristol (6 miles) and Bath (8 miles), the house features characterful apartments with high ceilings, kitchenettes and en-suites. Residents can enjoy a landscaped garden and a social hub with meals prepared by our in-house chef.

Abbeyfield, supporting independence in later life.

We have four houses which are located in Hanham, Henleaze, Redland, and Keynsham that provide supportive, independent living in self-contained flats. Each house offers communal lounges, dining rooms, and lovely gardens, fostering a caring community where residents enjoy privacy, companionship, and a vibrant lifestyle.



Our Private flats provide independence for older adults with reassuring support available.



Avoid the increasing costs of living with one monthly rental fee that covers all.



Delicious Home cooked meals provided every day.

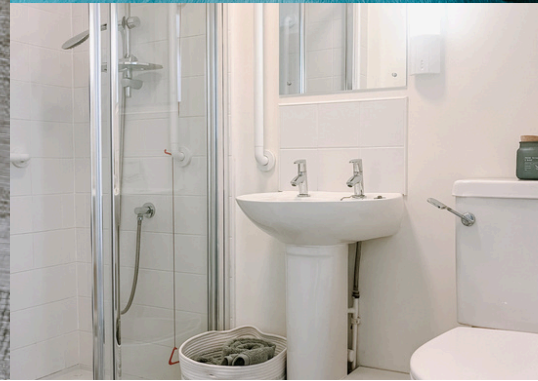


Experience the peace of mind and security that comes from living within our welcoming and supportive Houses.

 Abbeyfield House, 6 Westbourne Avenue, Keynsham, Bristol, BS31 2JD

 www.abbeyfield-bristol.co.uk  0117 973 6997

Abbeyfield
Bristol & Keynsham



Room 11

£2,939.30

Per Month

All-inclusive price which includes meals and all utilities.



En-Suite



Garden



Dining Room



Personal Alarm

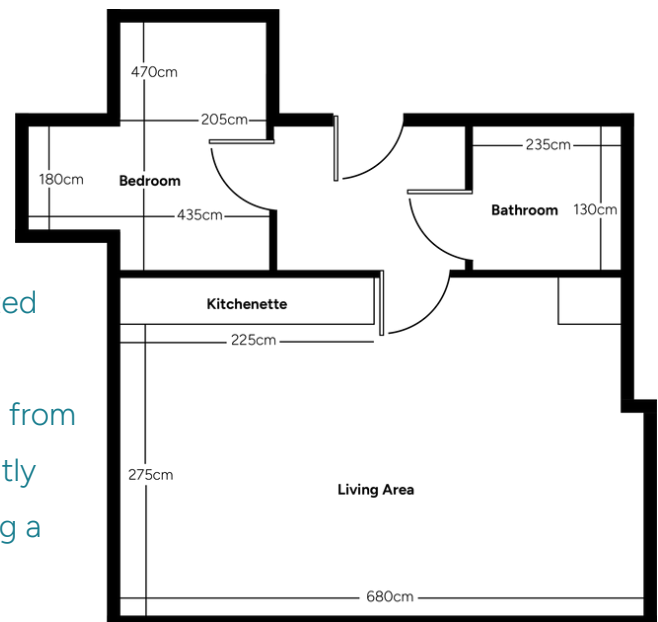


Social Events



Communal Lounge

One bedroom apartment situated on the top floor of Keynsham House. The apartment benefits from traditional features and a recently renovated kitchenette. Boosting a cosy lounge and ensuite, it's a wonderful space to make your own.



Contact us to book a viewing

 Abbeyfield House, 6 Westbourne Avenue, Keynsham, Bristol, BS31 2JD

 www.abbeyfield-bristol.co.uk  0117 973 6997

Abbeyfield
Bristol & Keynsham